

## FEATURE

- Injection-molded thermoplastic ABS housing, UL 94V-0 flame rating.
- Innovative, easy installation in minutes.
- Suitable for wall mount applications.
- Universal J-box mounting pattern.
- 120V/277VAC Dual voltage operation.
- 2X12pcs ultra bright 2835 SMT LED lamp heads for emergency mode.
- Built-in 3.6V1000mAh Nickel cadmium battery for minimum 90 minutes emergency operation. (JLEU3)
- Maximum 24 hours for full recharge time.
- Test switch and charge indicator.
- UL and cULus listed.
- 0° to 40° C indoor damp location listed.

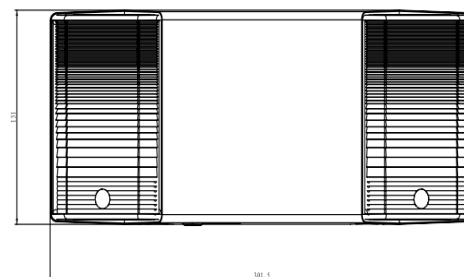
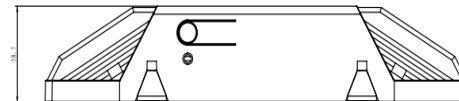
FAMILY: **JLEU4 / JLEU4 X**

NOTES:

TYPE: **DUAL HEAD EMERGENCY LIGHT**



CEC DOE FC



## ORDERING INFORMATION

FAMILY	HOUSING COLOR	REMOTE CAPACITY
JLEU4/JLEU4X	BLANK(WHITE)	NA
	B(BLACK)	NA

## PACKING INFORMATION

MODEL NO.	PACKING INFORMATION	WEIGHTS
JLEU4/JLEU4X	32x29.5x26cm/6pcs	5/4kgs

## ELECTRICAL INFORMATION

MODEL	RATED VOLTAGE	INPUT CURRENT	INPUT WATT	LED TYPE	CHARGING TIME	EMERGENCY RUN TIME
JLEU4/JLEU4X	120/277V	0.020/ 0.01A	2W	2x12pcs ultra bright 2835 SMT LED lamp	24 Hrs	90 Mins